

GILLIBRAND

HEALTH AND WELLBEING CENTRE

Steeped in a history of healthcare, the old Chorley Cottage Hospital building has been lovingly restored, retaining its decorative Victorian heritage, and adapted to cater for modern health and wellbeing services thus re-establishing its tradition as a place of wellbeing.

In 1893 Chorley Cottage Hospital opened on Gillibrand Street after a local benefactor, Alderman Henry Rawcliffe, contributed funds for the hospital to be built.

A further section of the building was added and opened in 1900, known as the 'Winstanley Wing' enabling the expansion of healthcare services offered.

From 1900 to the 1930s the site became known as 'The Rawcliffe Hospital'. As the increased demand for healthcare services outgrew the building, the committee of the time agreed it was not practical to continue to expand the existing site and decided instead to build a new hospital.

With the hospital relocated, the building on Gillibrand street functioned mainly as council offices, more recently as the planning department for Chorley Borough Council.

In 2015 The Chorley Surgery moved into the old Chorley Cottage Hospital building and invested in a restoration and refurbishment programme including modern healthcare facilities, bringing life back to the building to serve once again as a central location for health and wellbeing for the community.



The perfect place for health and wellbeing

The Gillibrand Health and Wellbeing Centre provides a choice of serviced clinical rooms suitable for clinical, consulting, healthcare and wellbeing complementary services.

Each room is fitted to a high clinical infection control standard, combining modern IT equipment, a consulting area plus a private patient area. The centre offers the rooms on an 'as needed basis' with flexible arrangements for room bookings.

The rooms provide an ideal location as a central base for regional consultants and healthcare specialists and for arranging one-off group consultations, as well as the perfect place for providing wellbeing, counselling and complementary healthcare services.

Here's what the Gillibrand Health and Wellbeing Centre offers:

- ✓ An opportunity to provide better access to your services
- ✓ Reach a wider client-base with no long-term lease commitments
- ✓ Work the hours you want to work and reduce commuting and travel times
- ✓ Keep your operational costs to a minimum with no fixed long-term lease
- ✓ Have a second location without the cost of maintaining an office
- ✓ Offer flexible hours; including out-of-hours, to meet you and your patients' needs
- ✓ No lead time before setting up and using the rooms reduces your administrative burden
- ✓ Deliver more informed results for your clients – with group consultations that can be arranged at one convenient central location
- ✓ Reduce travelling and improve consulting services using video consulting

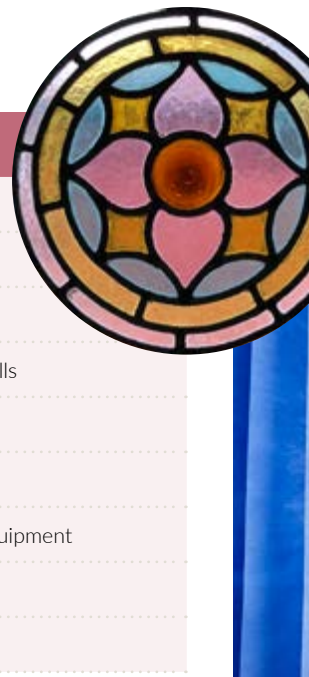


A place to provide the best of care

Operated by the well-respected Chorley Surgery, which has a Care Quality Commission (CQC) rating of 'outstanding', the Gillibrand Health and Wellbeing Centre aims to welcome and attract like-minded professionals to deliver their health and wellbeing services from a central base.

The Centre is located on the site of the old Chorley Cottage Hospital, Gillibrand Street, on the first floor above The Chorley Surgery.

The upstairs centre can be accessed by the modern glass-fronted platform lift or by using the iron railed Victorian staircase that leads visitors past the stained glass window that inspired the Centre's branding.



“Maintaining the community’s health and wellbeing is at the forefront of our objectives at Gillibrand Health and Wellbeing Centre. We pride ourselves on enabling all providers of clinical, wellbeing and complimentary services to work from one familiar space where patients can enjoy the dignity, comfort and privacy offered by the modern facilities, in the surrounds of an attractive and beautifully restored Victorian building.”

Andrea Trafford,
Business manager,
The Chorley Surgery

Each serviced clinical room features

- ✓ Full IT specification including computer, screen, scanner and printer
- ✓ Internet with N3 firewall
- ✓ Desk, drawers and chairs
- ✓ Telephone for receiving calls from reception and making outbound calls
- ✓ Examination couch*
- ✓ Privacy curtain
- ✓ General cleaning and infection prevention control accessories and equipment
- ✓ Sink unit and disposal area with hot and cold water
- ✓ Lockable cupboards for general storage

*Not available in The Noble Room

Shared amenities include

- ✓ Kitchen area
- ✓ Waiting room area
- ✓ Managed reception
- ✓ Male, female and disabled toilets
- ✓ Baby changing facilities

Group consultancy and video conferencing options

The larger rooms are suitable for group and video consultations.

The reception area has seating for 20 people and a large interactive screen. It can also be booked for team training, group presentations and seminars.

The reception area also has space set aside to promote the services offered at the Centre and to display leaflets and posters representing the providers occupying the centre.

A centre that focuses on wellbeing

Dignity and respect

All the serviced rooms are soundproofed and contain a curtained patient area. The rooms are regularly checked and cleaned daily.

Privacy and security

The IT system that services the rooms is NHS accredited with an N3 firewall and the system is regularly virus checked.

Flexible and friendly

Ideal for a variety of health, wellbeing and consultancy services, the centre operates seven-days-a-week.

This offers a suitable location for consultants in private practice to extend their services into the Chorley region.

The centre can also accommodate a wide range of health and wellbeing services that are complementary to general practice.



The N3 service enables clinicians and healthcare professionals to securely access N3 network services, enhancing confidentiality and IT security. This enables users to access their patients' data when working from Gillibrand Health and Wellbeing Centre.



The Gillibrand Health and Wellbeing Centre operates seven days a week from 8am to 8pm – with out-of-hours services available by prior arrangement.

The rooms are offered as morning, afternoon or evening sessions. Alternatively, room bookings can be made as a weekly slot – either as a regular session booking, or with a short-term fixed lease arrangement.

Exclusive room bookings and long-term leases are also available.



You only pay for the time the facilities are required. We can adapt booking and reservation arrangements to meet your requirements with out-of-hours services also available.

Centered in the heart of Lancashire

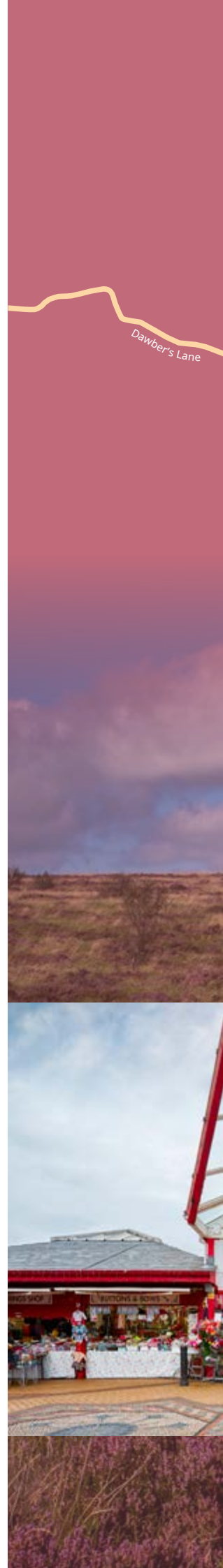
The Gillibrand Health and Wellbeing Centre is located in the heart of the bustling north west town of Chorley. Famous for its traditional Flat Iron Market that takes place every Tuesday, Chorley is steeped in tradition and local history and is surrounded by the stunning West Pennine Moors.



Chorley is conveniently located as a mid-point between the cities of Manchester and Preston with an excellent road network linking both north and south to the M6 and M61 motorways and with access to East Lancashire and Yorkshire via the M65.

There is car parking onsite with additional three-hour free parking available in the nearby community car park which also services the town centre. Disabled parking is available onsite with additional designated spaces on the surrounding streets.

The nearby Chorley Interchange operates bus services across the region and the centrally located Chorley train station is serviced by Trans Pennine Express and the Northern Manchester to Preston Lines. The Centre is in easy walking distance from the Chorley town centre.



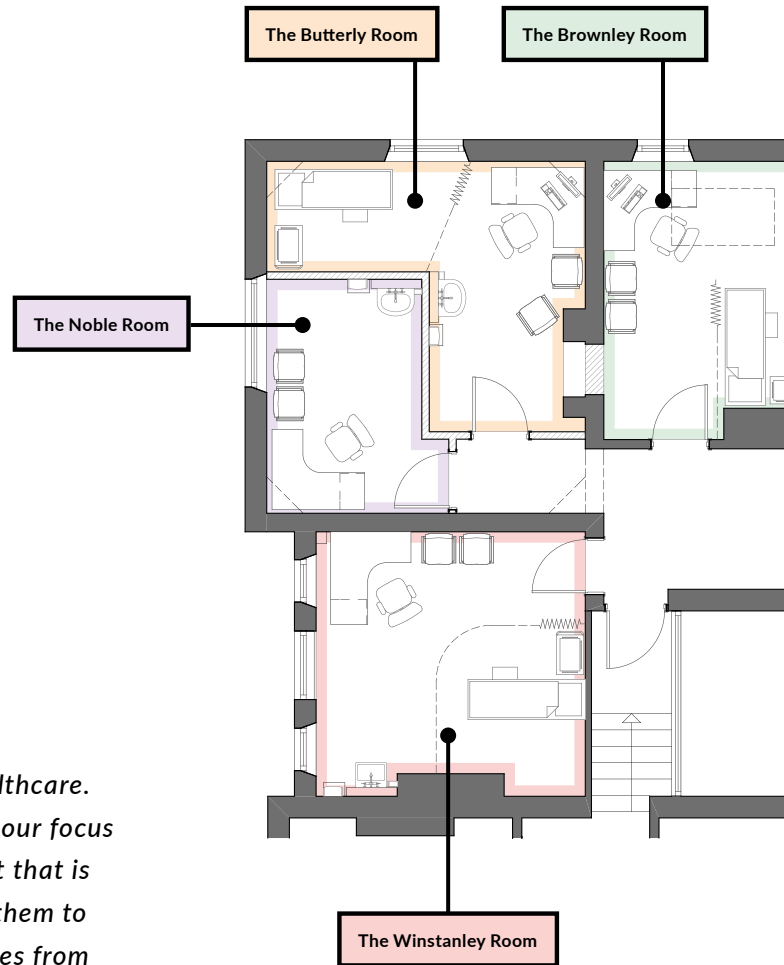


© OpenStreetMap contributors

Gillibrand Health and Wellbeing Centre



Seven modern serviced clinical and consultancy rooms on a single level first floor location with easy access to additional amenities.



“We are driven by our vision to deliver excellence in healthcare. Allied to our drive for exceptional patient experience, is our focus in ensuring clinicians are able to work in an environment that is relaxed, comfortable, clean and well-equipped to allow them to deliver the best possible care to their patients. This comes from the fact that we too are clinicians. We are always looking to improve and build on the feedback of our clients to continually improve the outstanding space we offer.”

The Chorley Surgery, Dr Shashidhar Khandavalli and Dr Lindsey Dickinson, GP Partners





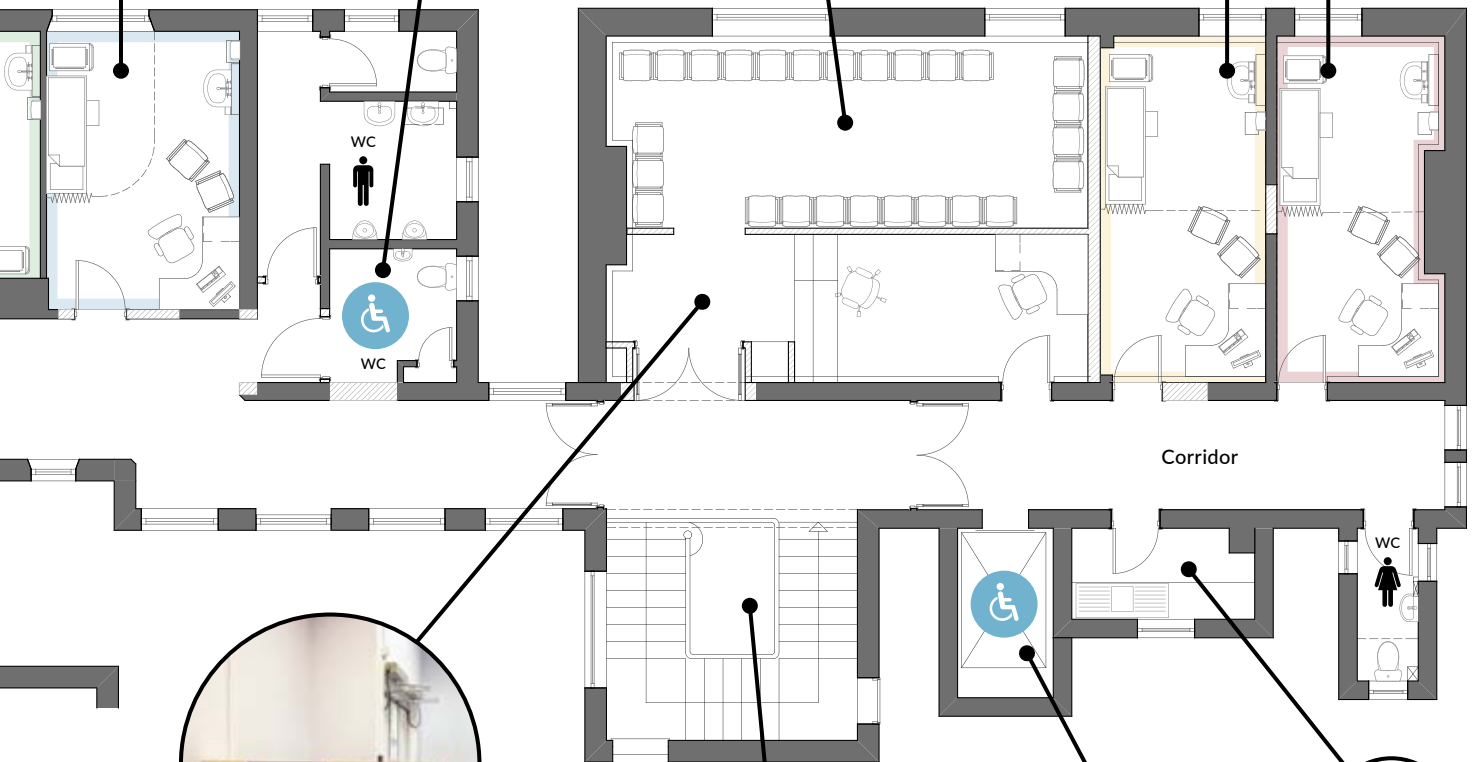
Communal waiting room with interactive screen that can be adapted and booked for team training and seminars.

Disabled toilet

The Dinsley Room

The Rawcliffe Room

The Lennon Room



Space in reception to share business literature to further promote your services



Modern glass-fronted platform lift for disabled access



Room specifications

Each serviced clinical room features		
✓ Full IT specification including computer, screen, scanner and printer	✓ Telephone for receiving calls from reception and making outbound calls	✓ General cleaning and infection prevention control accessories and equipment
✓ Internet with N3 firewall	✓ Examination couch	✓ Sink unit and disposal area with hot and cold water
✓ Desk, drawers and chairs	✓ Privacy curtain	✓ Lockable cupboards for general storage

The room hire fee is offered on a sliding scale: dependent upon the size of room.

Suitable for general patient services:




The Dinsley Room

Area

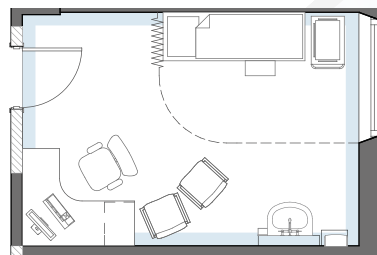
14.09m²

Features

- ✓ Close proximity to stairwell
- ✓ Near to reception area
- ✓ Next to the disabled toilet 

Perimeter

3.13m
x
4.5m



The Dinsley Room is named after the local architect W Magill Dinsley who designed the building.

W Magill Dinsley was the architect of both the Rawcliffe Hospital and the Winstanley Wing.

Suitable for general patient services with easy access to disabled facilities:



The Lennon Room


Area

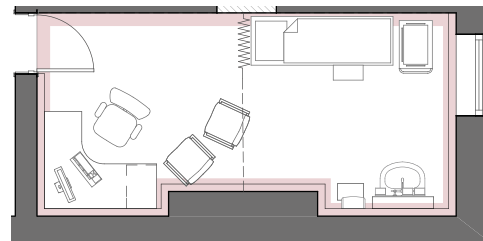
14.61m²

Perimeter

2.6m x 5.62m

Features

- ✓ Close proximity to lift for disabled access 
- ✓ Corner location with increased privacy
- ✓ Near to reception area
- ✓ Close to kitchen area
- ✓ Near toilets



The Lennon Room is named after the Dean J J Lennon who donated the land for the hospital.

Dean J J Lennon was at St Gregory's Church, Weldbank, Chorley. He wanted a cottage hospital to be built and arranged the donation of the land (part of the area known as Mount Pleasant) so the hospital could be built.



The Rawcliffe Room


Area

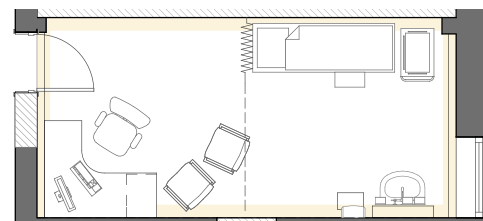
14.61m²

Perimeter

2.6m x 5.62m

Features

- ✓ Close proximity to lift for disabled access 
- ✓ Opposite kitchen area
- ✓ Near toilets
- ✓ Near to reception area



The Rawcliffe Room is named after Alderman Henry Rawcliffe who put the proposals through to build the original hospital.

Henry Rawcliffe was a wealthy local man who purchased Gillibrand Hall Estate in 1881. He was president of The Chorley Dispensary. He offered to build and equip the hospital, and consequently if he had not made this offer it is unlikely that the hospital would have ever been built.

Suitable for small group consultations:




The Brownley Room

Area

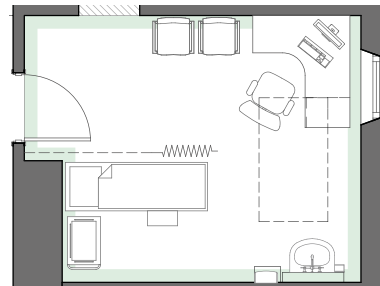
18.79m²

Features

- ✓ Large square room
- ✓ Close proximity to stairwell
- ✓ Near to reception area
- ✓ Next to the disabled toilet 

Perimeter

4.46m
x
4.46m



The Brownley Room is named after the local builder who managed the construction of the original building back in 1893.

Rich with decorative Victorian features, the building's exterior has changed very little since its construction, which is testament to the quality of Brownley's work.

Corner room with discreet patient area:



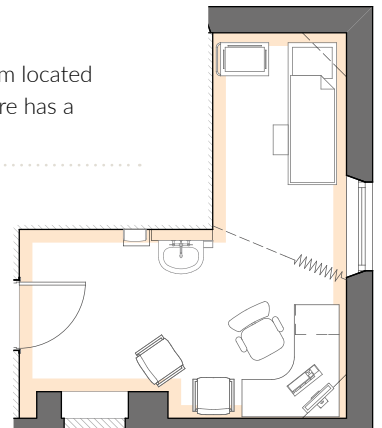
The Butterly Room

Area

15.20m²

Features

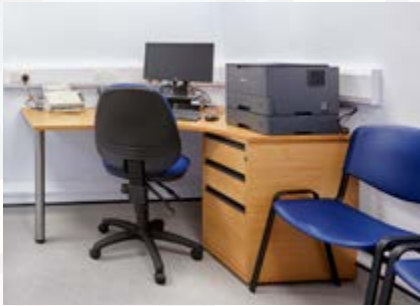
- ✓ This L-shaped corner room located in the far end of the centre has a discreet patient area



The Butterly Room is named after the first surgeon to operate in the cottage hospital.

Despite working in conditions without the modern and technical equipment now provided in the Centre, Butterly and his surgical team delivered a valuable medical service at the hospital.

Suitable for group or video consultations:



The Noble Room

Area

10.00m²

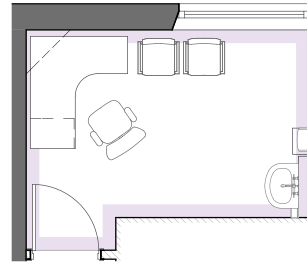
Features

- ✓ An Ideal consulting room
- ✓ Quiet room location

*This room does not include an examination couch

Perimeter

??m
x
??m



The Noble Room is named after the first matron to work in the original hospital.

The care provided by matron Noble and her nursing team helped to improve the health and wellbeing of the local people.



The Winstanley Room

Area

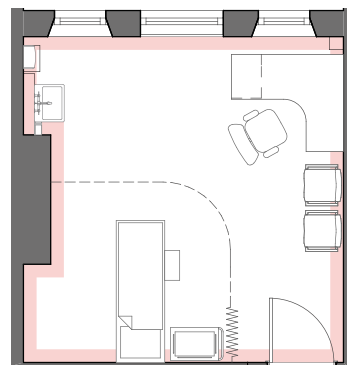
19.28m²

Features

- ✓ Large room
- ✓ Suitable for group meetings and consulting
- ✓ Suitable for video consulting
- ✓ Quiet room location

Perimeter

4.61m
x
4.32m



The Winstanley Room is named after Elizabeth Winstanley's husband. Elizabeth funded the cost of a new wing to the building in 1899.

Mrs Elizabeth Winstanley offered to fund the building of a new wing to the hospital. She no longer lived in Chorley but never forgot the town and was happy to provide funds for the new wing named the Winstanley Wing in memory of her late husband.

Extend your care today

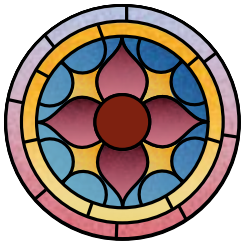
"It is so important for me to be able to work where the clinical rooms are of the highest standard. The clinical rooms at the Gillibrand Health and Wellbeing Centre are clean, well equipped, have excellent computers and they are spacious and comfortable. The patient experience is brilliant here."

Dr S Khandavalli, GP Partner,
The Chorley Surgery

The Gillibrand Health and Wellbeing Centre is operated by The Chorley Surgery, a friendly GP practice located in the centre of Chorley.

With over 9,000 registered patients, the practice's aim is to 'strive for excellence in healthcare for you and your community'. The Chorley Surgery has been rated as outstanding by the Care Quality Commission (CQC) in November 2017 and is the only GP practice within Chorley, South Ribble and Greater Preston to achieve this rating.





GILLIBRAND

HEALTH AND WELLBEING CENTRE



"It is a privilege to be able to provide our Community ENT service from The Gillibrand Health and Wellbeing Centre. The staff at the centre have been very supportive with helping us to mobilise our service from this prime location and genuinely make our staff feel like they are an extension of the team. The clinical rooms and waiting area are exceptional and most importantly our patients are delighted that we can care for them in such a pleasant environment."

Shahzad Hussain,
Business and operations manager,
Beacon Medical Services Group

For further enquiries please contact:

Andrea Trafford, business manager on
01257 513990 or email a.trafford@nhs.net

Gillibrand Health and Wellbeing Centre
The Chorley Surgery
24-26 Gillibrand Street
Chorley
Lancashire
PR7 2EJ



24-26 GILLIBRAND STREET
CHORLEY
LANCASHIRE
PR7 2EJ