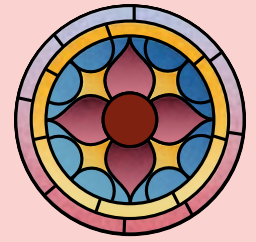
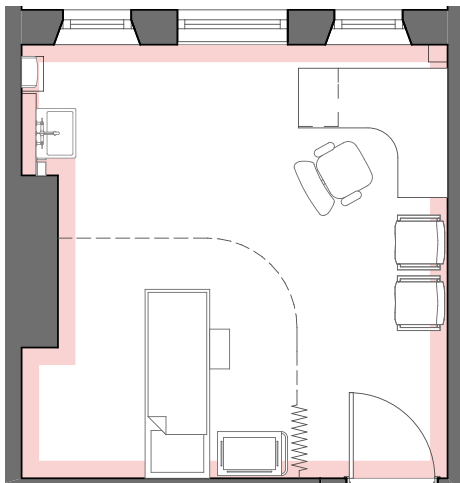


The Winstanley Room



Features

- ✓ Large room
- ✓ Suitable for group meetings and consulting
- ✓ Suitable for video consulting
- ✓ Quiet room location



Area

19.28m²

Perimeter

4.61m
x
4.32m

The Gillibrand Health and Wellbeing Centre operates seven days a week from 8am to 8pm – with out-of-hours services available by prior arrangement.

The rooms are offered as morning, afternoon or evening sessions. Alternatively, room bookings can be made as a weekly slot – either as a regular session booking, or with a short-term fixed lease arrangement.

Exclusive room bookings and long-term leases are also available.

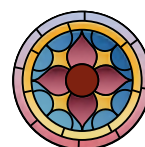
Each serviced clinical room features

- ✓ Full IT specification including computer, screen, scanner and printer
- ✓ Internet with N3 firewall
- ✓ Desk, drawers and chairs
- ✓ Telephone for receiving calls from reception and making outbound calls
- ✓ Examination couch
- ✓ Privacy curtain
- ✓ General cleaning and infection prevention control accessories and equipment
- ✓ Sink unit and disposal area with hot and cold water
- ✓ Lockable cupboards for general storage

Shared amenities include

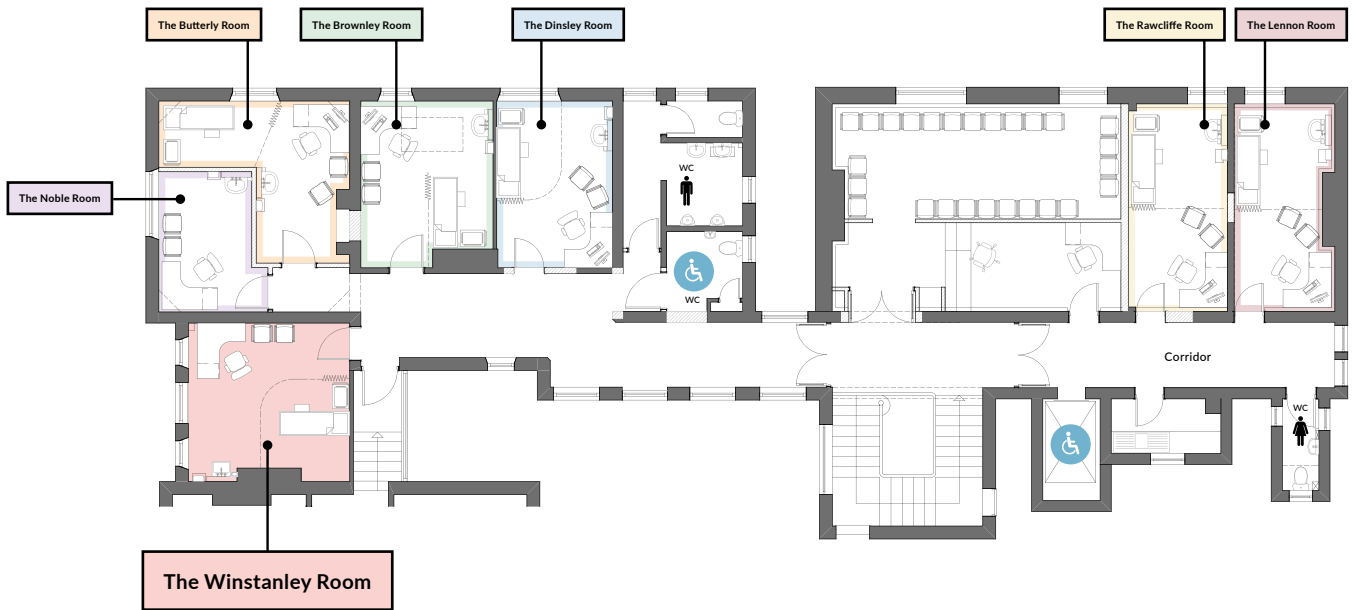
- ✓ Kitchen area
- ✓ Waiting room area
- ✓ Managed reception
- ✓ Male, female and disabled toilets
- ✓ Baby changing facilities

Gillibrand Health and Wellbeing Centre
The Chorley Surgery, 24-26 Gillibrand Street, Chorley, Lancashire PR7 2EJ
Tel: 01257 513990



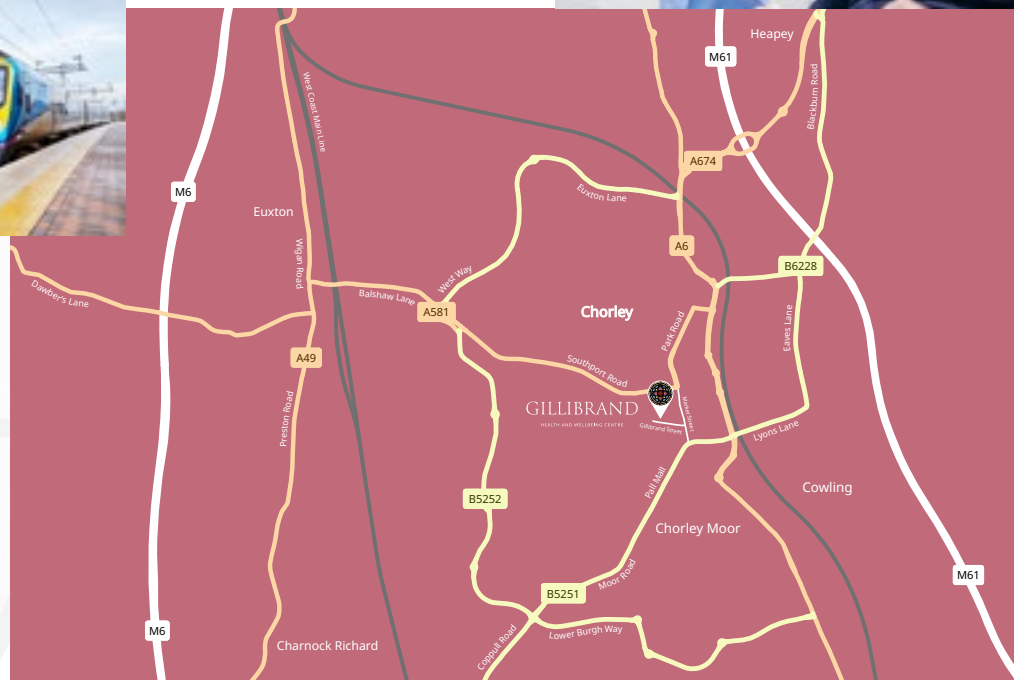
GILLIBRAND
HEALTH AND WELLBEING CENTRE

The perfect place for health and wellbeing

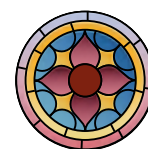


For further enquiries
please contact:

Andrea Trafford, business manager
on 01257 513990 or email
a.trafford@nhs.net



Gillibrand Health and Wellbeing Centre
The Chorley Surgery, 24-26 Gillibrand Street, Chorley, Lancashire PR7 2EJ



GILLIBRAND
HEALTH AND WELLBEING CENTRE